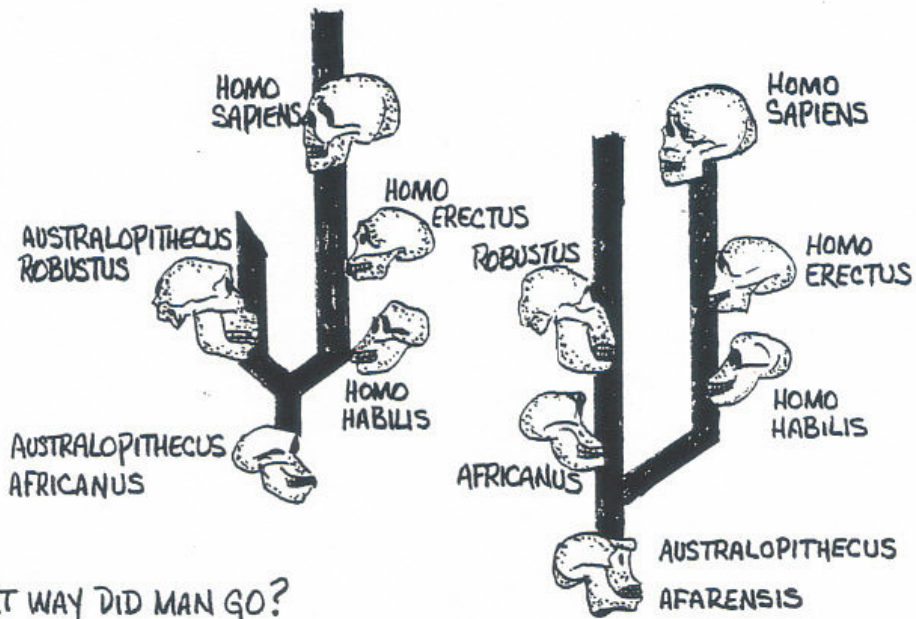
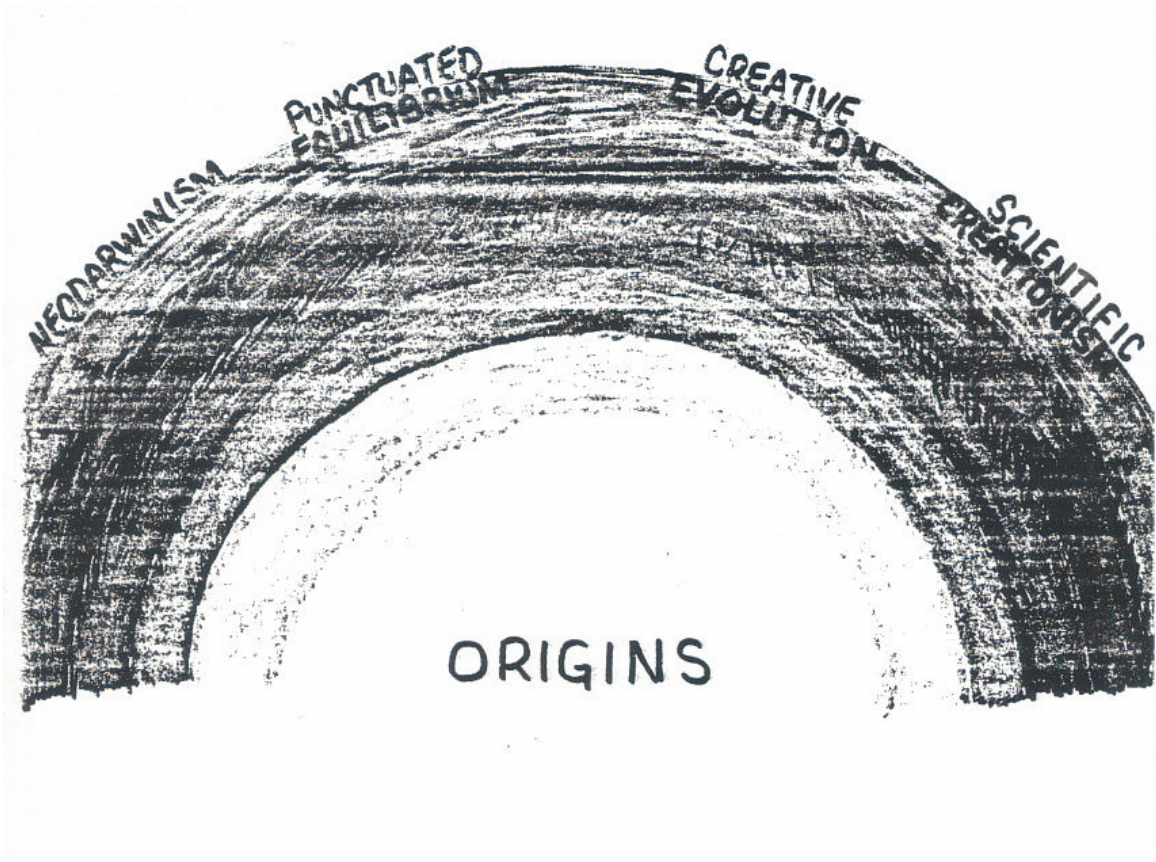


ORIGINS



WHAT WAY DID MAN GO?





NEW IDEAS



EVIDENCE OF ORIGINS

EVOLUTION



MICROEVOLUTION

THERMODYNAMICS



CREATIONISM



STASIS

MACROEVOLUTION



MUTATIONS

VARIATIONS



RADIO METRICS



SUPERNATURAL INFLUENCE



TIME

BIG BANG THEORY

ENTROPY



ENTROPY



EXPERIMENT



Marie and Pierre Curie in their laboratory, 1903

MARIE AND PIERRE CURIE DISCOVER RADIUM.

EXPERIMENT
AND
OBSERVE

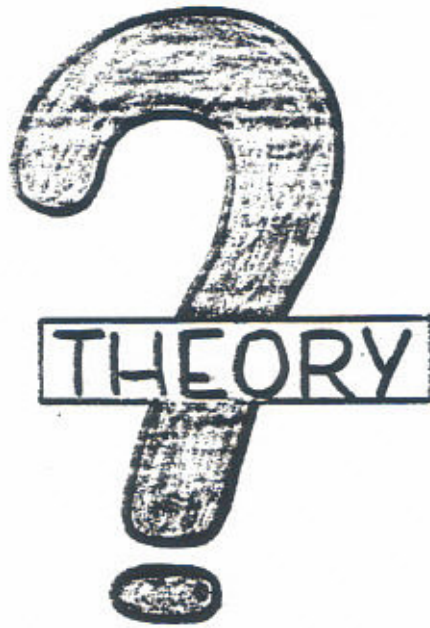


OBSERVE
AND
RECORD



APPLYING THE SCIENTIFIC METHOD

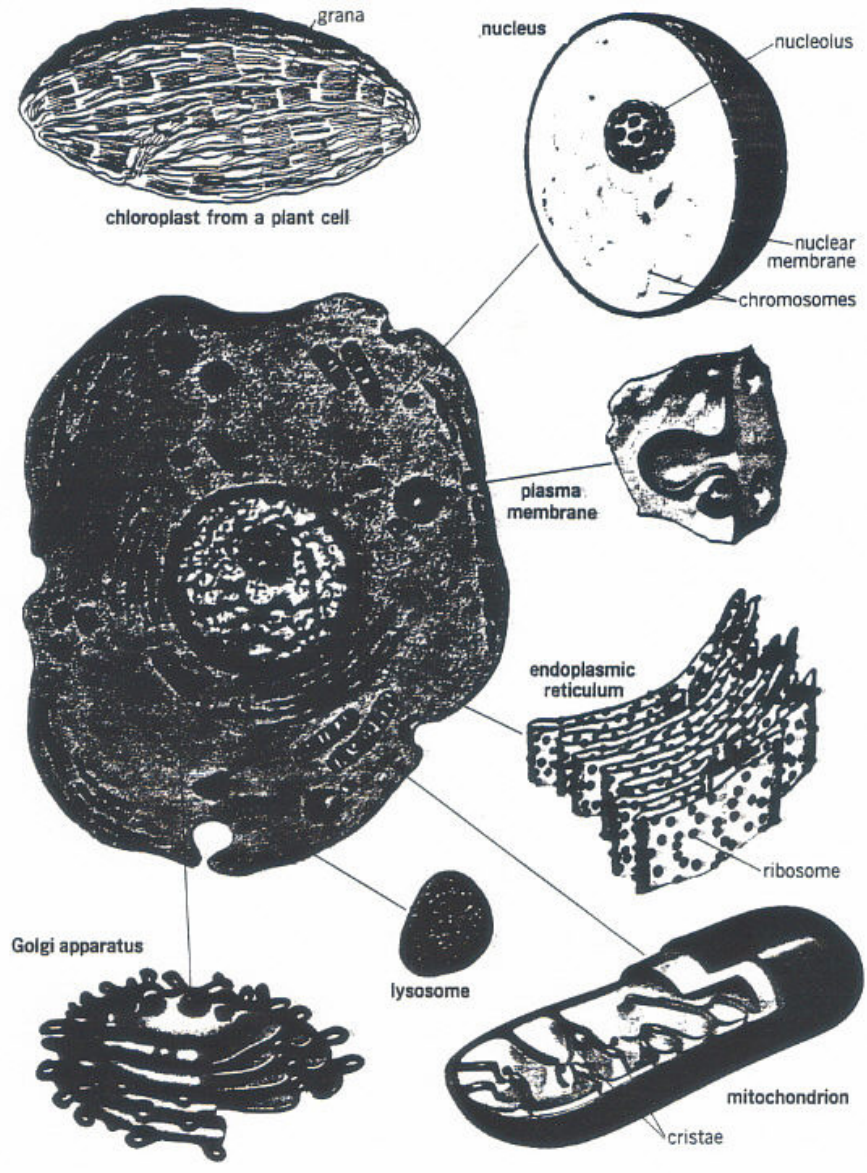




WHAT IS A THEORY?

THE CELL THEORY

THE CELL IS THE BASIC UNIT OF LIFE



THE ATOMIC THEORY



John Dalton (1766-1844)

1. ALL MATTER IS COMPOSED OF ATOMS.
2. ATOMS OF THE SAME ELEMENTS ARE ALIKE.
3. ATOMS OF AN ELEMENT HAVE A DEFINITE AVERAGE MASS.
4. ATOMS OF DIFFERENT NATURALLY OCCURRING ELEMENTS HAVE DIFFERENT AVERAGE MASSES.
5. ATOMS DO NOT SUBDIVIDE DURING CHEMICAL REACTIONS.

THE ELECTRON THEORY



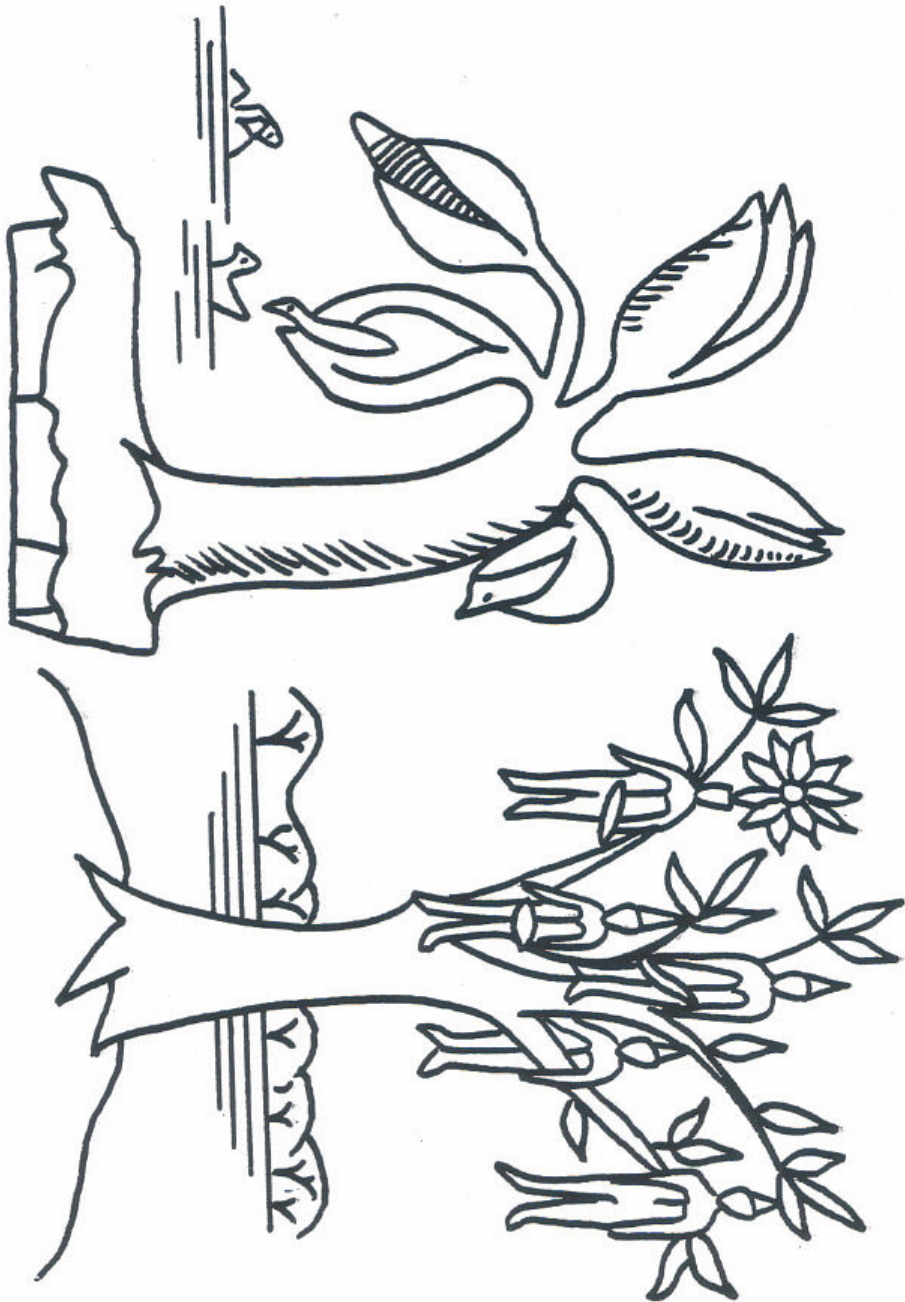
NIELS BOHR, IN 1913, DEVELOPED THE THEORY THAT ELECTRONS MOVE ABOUT THE NUCLEUS OF AN ATOM IN ORBITS, MUCH AS THE PLANETS REVOLVE ABOUT THE SUN.

THE GERM THEORY



PASTEUR'S EARLY EXPERIMENTS ON SPONTANEOUS GENERATION HELPED ESTABLISHED THE GERM THEORY OF DISEASE.

SPONTANEOUS GENERATION



GOOSE TREE

WAK-WAK TREE

IDEAS

OPINION

13

HYPOTHESIS

H

THEORY

OBSERVATIONS

LIMITATIONS

DATA

EXPLANATION

ASSUMPTIONS

IDEAS

THEORY

OBSERVATIONS

EXPLANATION

DATA

ASSUMPTIONS

HYPOTHESIS

OPINION

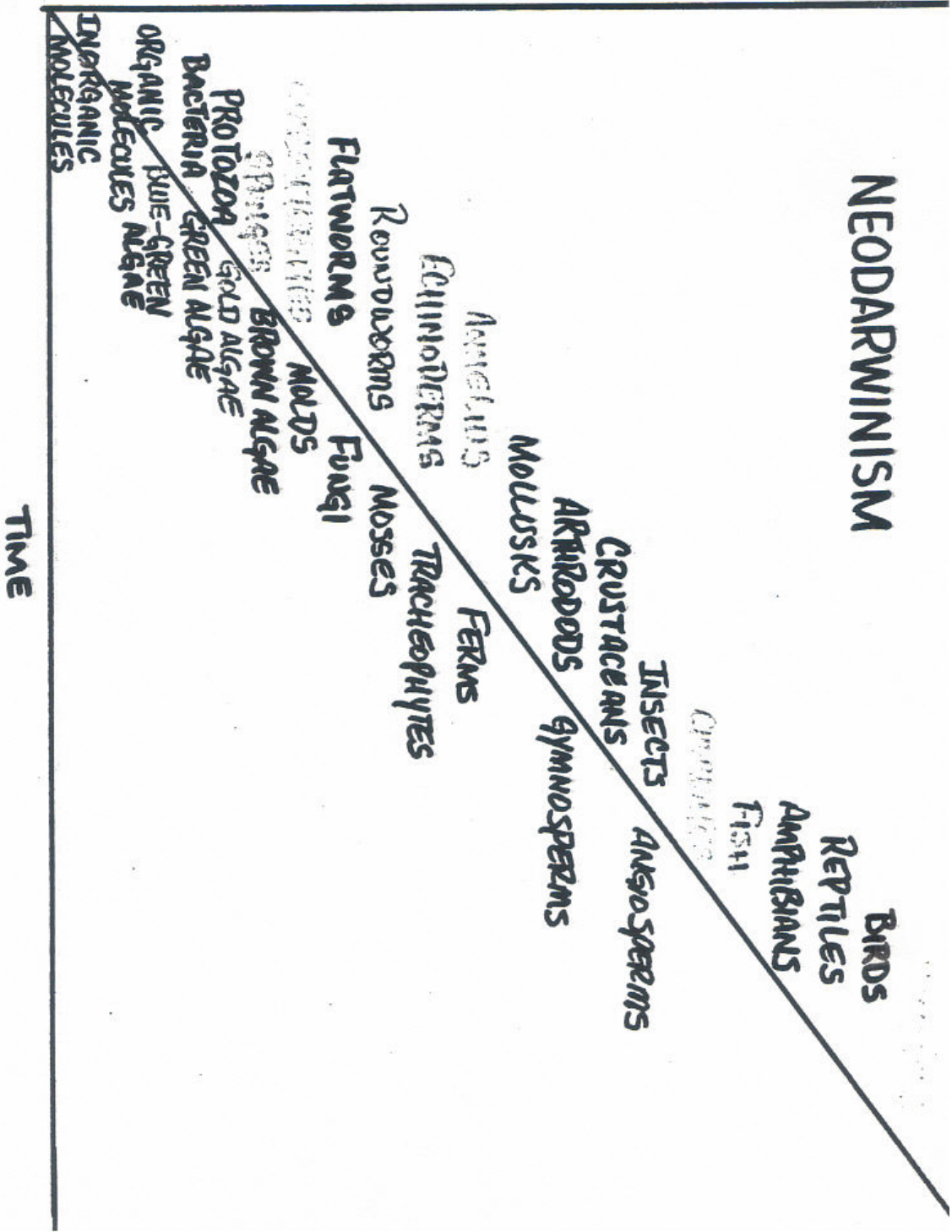
LIMITATIONS

NEODARWINISM

LIFE ORIGINATED FROM NONLIFE BY PHYSICAL-CHEMICAL PROCESSES UNDER SPECIAL CONDITIONS AND ALL ORGANISMS, BOTH LIVING AND EXTINCT, ARE RELATED BY DESCENT, WITH MODIFICATION.

NUMBER OF NEW SPECIES

NEODARWINISM



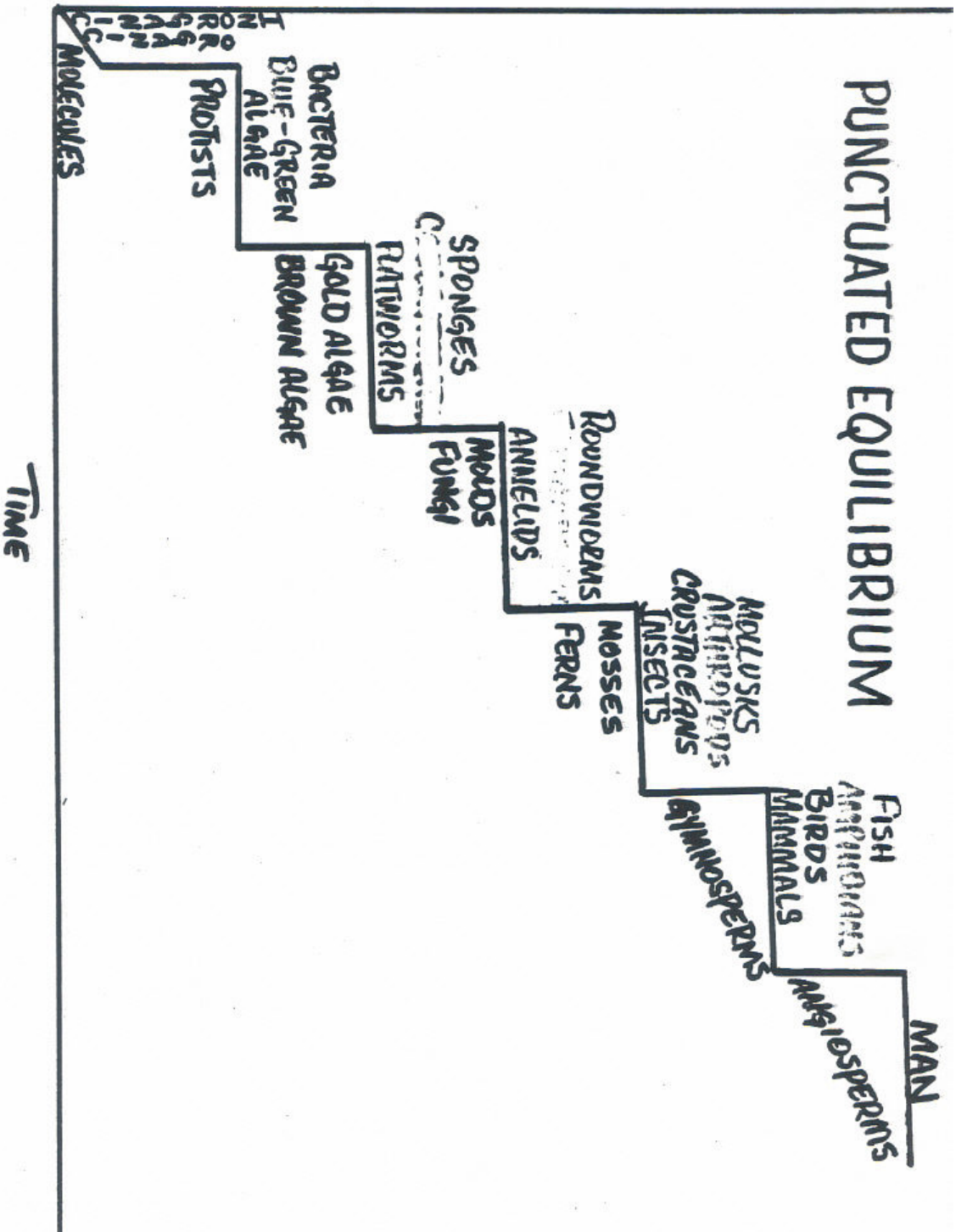
TIME

PUNCTUATED EQUILIBRIUM

LIFE ORIGINATED FROM NONLIFE BY PHYSICAL-CHEMICAL PROCESSES UNDER SPECIAL CONDITIONS AND ALL ORGANISMS, BOTH LIVING AND EXTINCT, ARE RELATED BY DESCENT, WITH MODIFICATION. THE RATE AT WHICH MODIFICATION HAS OCCURRED HAS BEEN EXTREMELY RAPID IN SOME INSTANCES AND NEARLY STATIC IN OTHERS. MOST SPECIATION RESULTS FROM RAPID GENETIC MODIFICATION.

NUMBER OF NEW SPECIES

PUNCTUATED EQUILIBRIUM

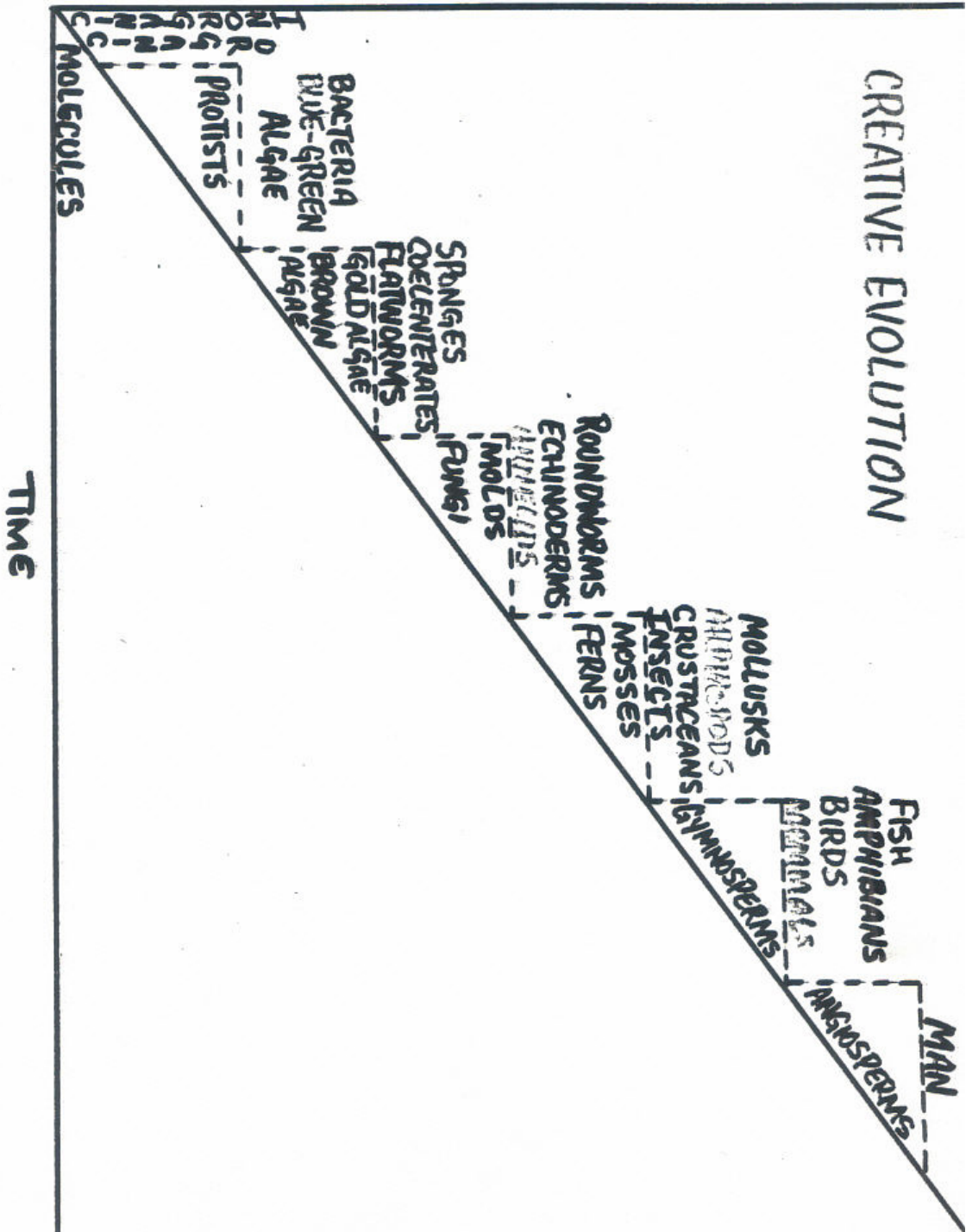


CREATIVE EVOLUTION

A SUPERNATURAL INFLUENCE ORIGINATED AND MAY ACTIVELY CONTINUE TO MAINTAIN ALL OF THE MATTER AND ENERGY IN THE UNIVERSE AND THE NATURAL LAWS WHICH GOVERN IT. THIS SUPERNATURAL INFLUENCE MAY CONTINUE TO ACT IN THE UNIVERSE. SOME BELIEVED THE SUPERNATURAL INFLUENCE CREATED THE NATURAL PROCESSES OF CHEMICAL AND BIOLOGICAL EVOLUTION AND FROM THESE ORIGINATED THE DIVERSITY OF LIVING THINGS ON EARTH. OTHERS BELIEVE THAT THE DIVERSITY OF LIVING THINGS MAY HAVE BEEN BROUGHT ABOUT PARTIALLY BY EVOLUTION AND PARTIALLY BY SUBSEQUENT CREATIVE ACTS.

NUMBER OF NEW SPECIES

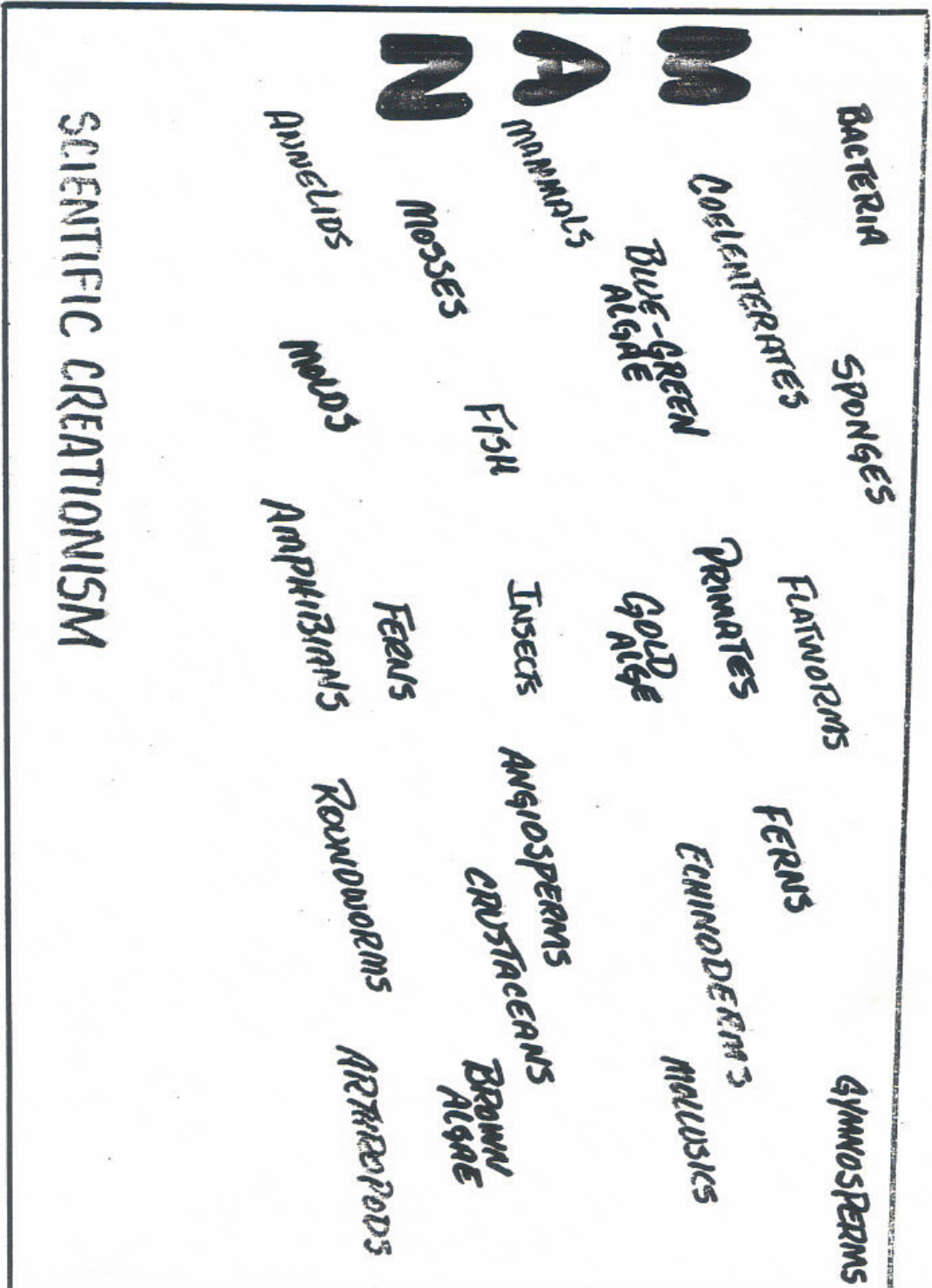
CREATIVE EVOLUTION



SCIENTIFIC CREATIONISM

LIFE APPEARED ON EARTH ABRUPTLY AS VARIOUS ORIGINAL AND DIFFERENT GROUPS OF ORGANISMS IN FULLY FUNCTIONAL FORM. GENETIC VARIABILITY PERMITS CHANGES WITHIN POPULATIONS (MICROEVOLUTION) BUT EXCLUDES CHANGES FROM ONE MAJOR GROUP TO ANOTHER. (MACROEVOLUTION).

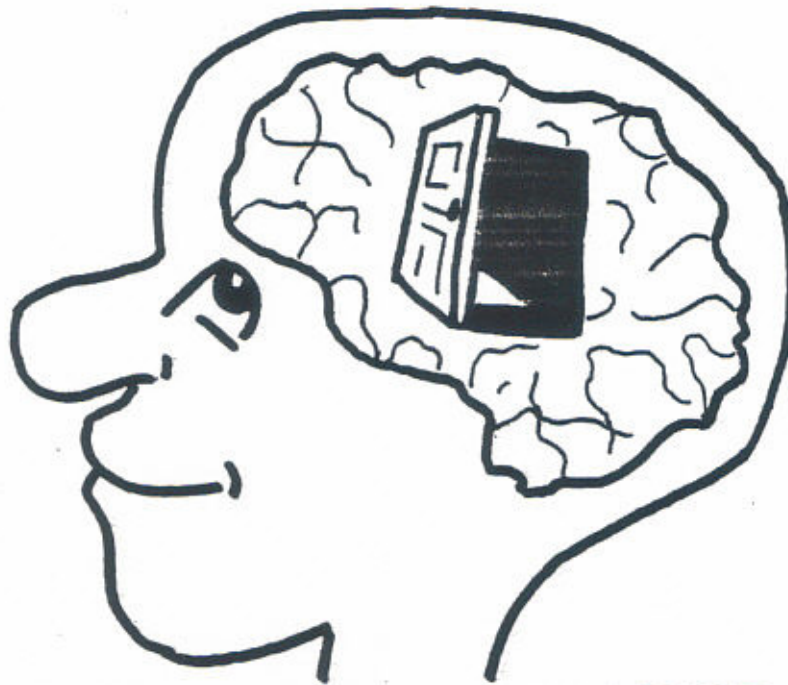
NUMBER OF NEW SPECIES



TIME



DESIRE TO LEARN



OPENMINDEDNESS